



Score	Energy rating	Current	Potential
92+	A		
81-91	B		
69-80	C	74 C	80 C
55-68	D		
39-54	E		
21-38	F		
1-20	G		



(for more photographs go to www.maysagents.co.uk)

£299,950 Freehold

2 Pinewood Gardens
Bognor Regis, PO21 2XB

www.maysagents.co.uk



These particulars are believed to be correct but their accuracy is not guaranteed. They do not form part of any contract.
Mays The Village Agent Ltd. Company Number 7930877. Registered in Cardiff. Registered Office: 93 Aldwick Road, Bognor Regis PO21 2NW

Are you looking for that elusive combination of a property that could do with a bit of modernisation, but is ready to move into whilst funds and time allow ? If so this **SEMI DETACHED HOUSE** might just be what you are looking for. Certainly 'liveable' yet providing an opportunity to make your mark as and when you are ready ! Already having **gas fired central heating, and uPVC framed double glazing**, one can see that the rest of the improvement could be largely cosmetic - it's up to you to decide. To see for your self whether this property is suitable, why not contact **May's** for an appointment to view, after all you won't know until you look inside.

ACCOMMODATION

uPVC framed double glazed door to:

ENTRANCE LOBBY:

radiator; door to:

CLOAKROOM.:

close coupled W.C.; wash hand basin.

OPEN PLAN LIVING/DINING ROOM: 27' 0" x 17' 0" (8.22m x 5.18m)

(overall maximum measurements) LIVING ROOM SECTION: 18' X 10'4 (into bay) radiator; telephone point; T.V. aerial point. DINING SECTION: 9'3 x 9'1. serving hatch; radiator; double glazed door to rear garden.

KITCHEN: 9' 6" x 7' 3" (2.89m x 2.21m)

(maximum measurement over units) floor standing cupboards with worktop and wall mounted cabinets over; tiled splash backs; stainless steel sink; appliance space.

F.F. LANDING:

trap hatch to roof space; cupboard housing gas fired combination boiler.

BEDROOM 1: 13' 3" x 10' 2" (4.04m x 3.10m)

range of built in bedroom furniture; radiator; built in cupboard.

BEDROOM 2: 9' 0" x 9' 0" (2.74m x 2.74m)

radiator; built in cupboard.

BEDROOM 3: 9' 7" x 6' 5" (2.92m x 1.95m)

radiator.

BATHROOM:

fully tiled with matching suite comprising of panelled bath with hand held mixer tap and independent shower mixer; glazed folding screen; wash hand basin inset in vanity unit with twin cabinets beneath; W.C. with concealed cistern; radiator.

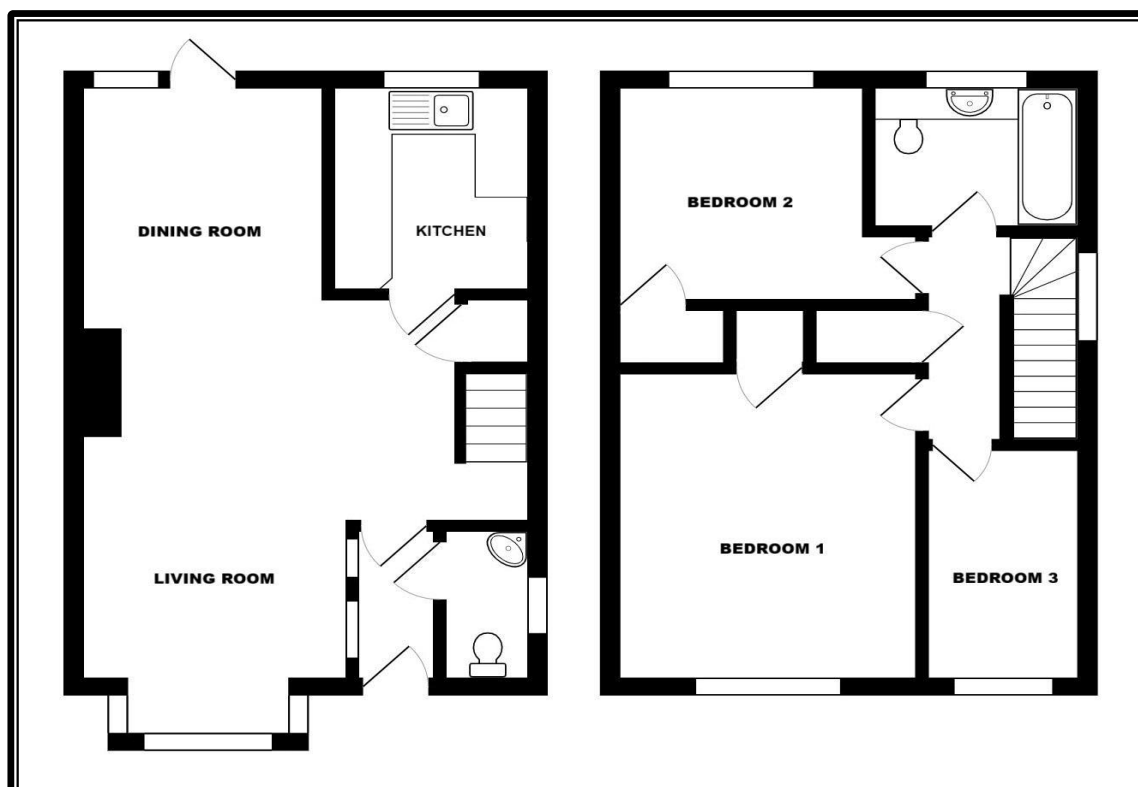
OUTSIDE AND GENERAL

GARDENS:

The REAR GARDEN has maximum measurements of some 30'8 x 21'7 and has been laid to a combination of patio and lawn., Gateway access to rear garage compound. A further side gate leads to the FRONT GARDEN which has been laid to lawn.

GARAGE:

located in compound with metal up and over door.



The mention of any appliance and/or services in these sales particulars does not imply that they are in full and efficient working order or that they have been tested.